



Central Okanagan
Public Schools

Together We Learn

BLACK MOUNTAIN ELEMENTARY CATCHMENT REVIEW

September 2018

LONG TERM FACILITY PLAN

- Requirement of the Ministry of Education
- Plan how to manage school facilities to deliver educational programming
- Identifies:
 - Demographic and Enrolment Trends
 - Challenges and Opportunities
 - Options
 - Recommendations
- Adopted Dec 2012

PURPOSE AND PROCESS

Purpose

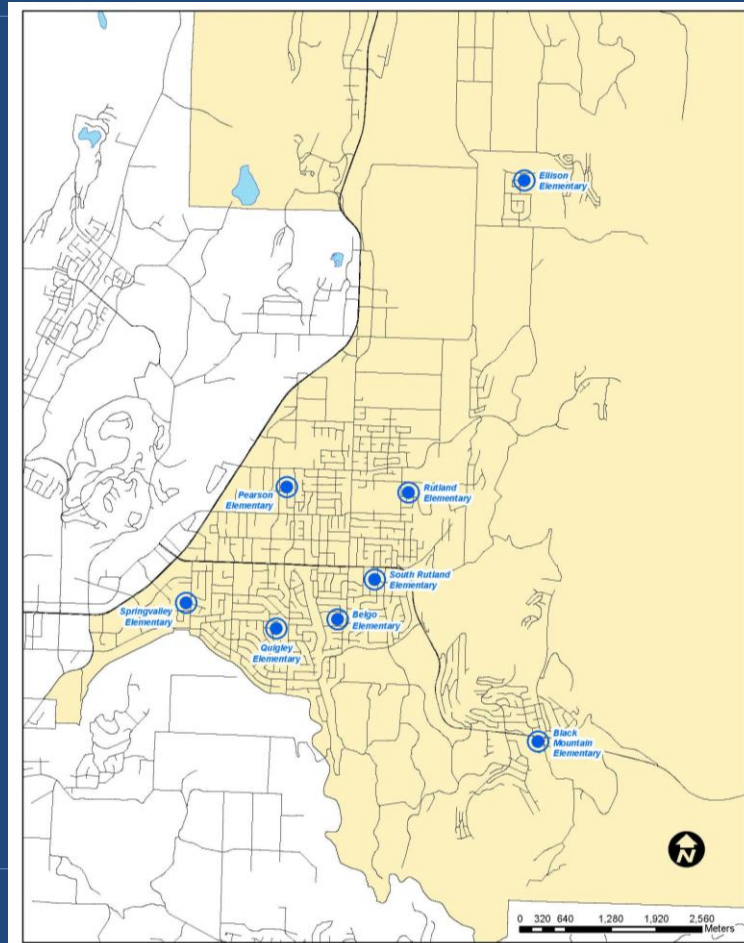
- Direction from Long Term Facility Plan

“Reinstate catchment boundaries for Ellison Elementary and Black Mountain Elementary to regulate student numbers and more clearly define transportation eligibility”

• Process

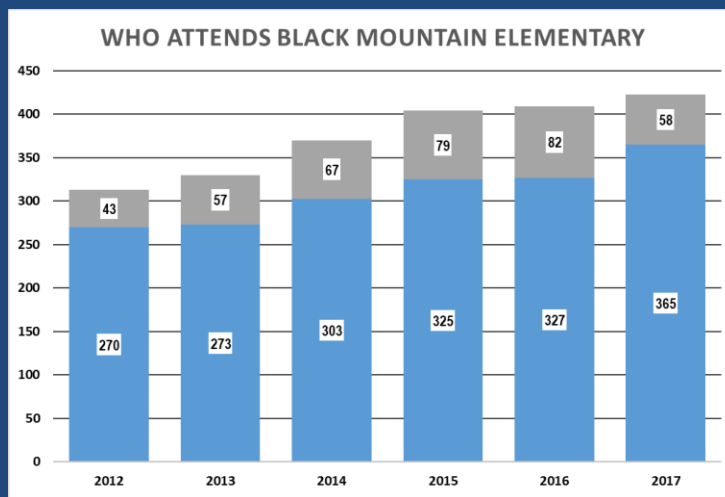
- Review options for the boundaries with the school PAC's
- Bring a recommendation forward

RUTLAND AREA CATCHMENT BOUNDARY



BLACK MOUNTAIN ELEMENTARY

NOMINAL CAPACITY		ACTUAL				PROJECTED								
		2014	2015	2016	2017	2018	2019	2020	2021	2022	2023			
40	K	78	67	65	76	71	80	70	73	73	73	73	73	73
350	ELEM	334	332	343	349	363	375	381	380	382	378	380	373	376
390	Total	412	399	408	423	434	455	451	453	455	451	453	446	449
Over/Under Nominal	Capacity	22	9	18	35	44	65	61	63	65	61	63	56	59



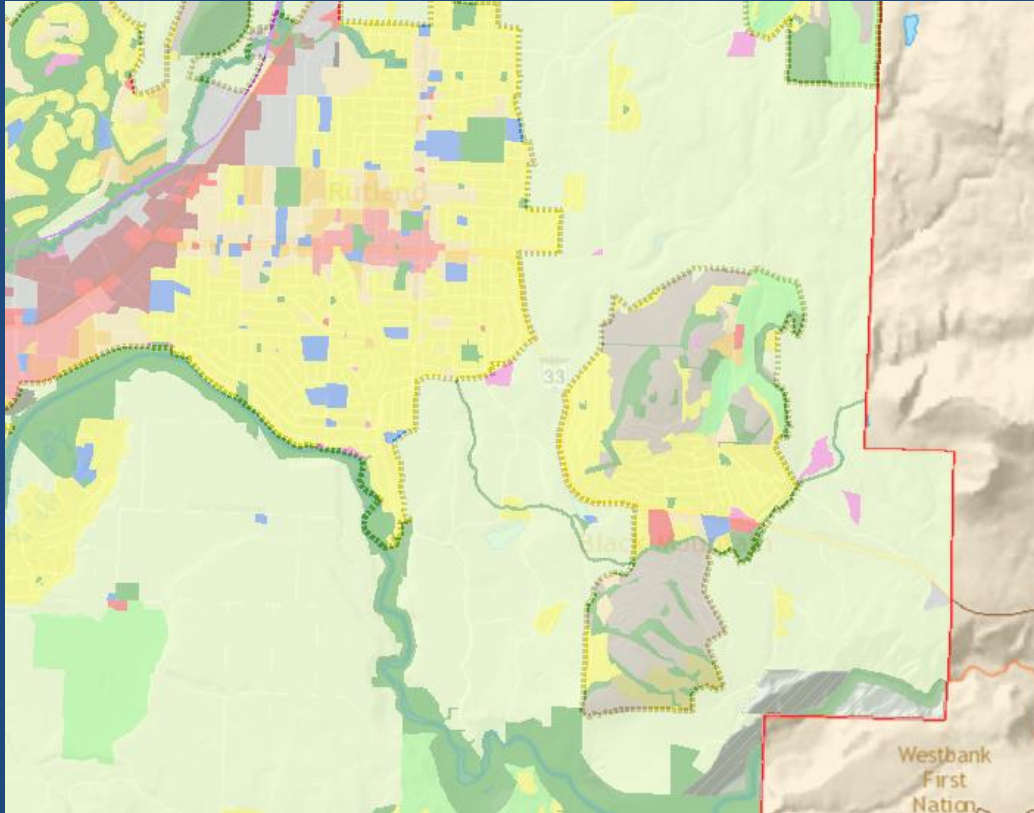
OPTIONS

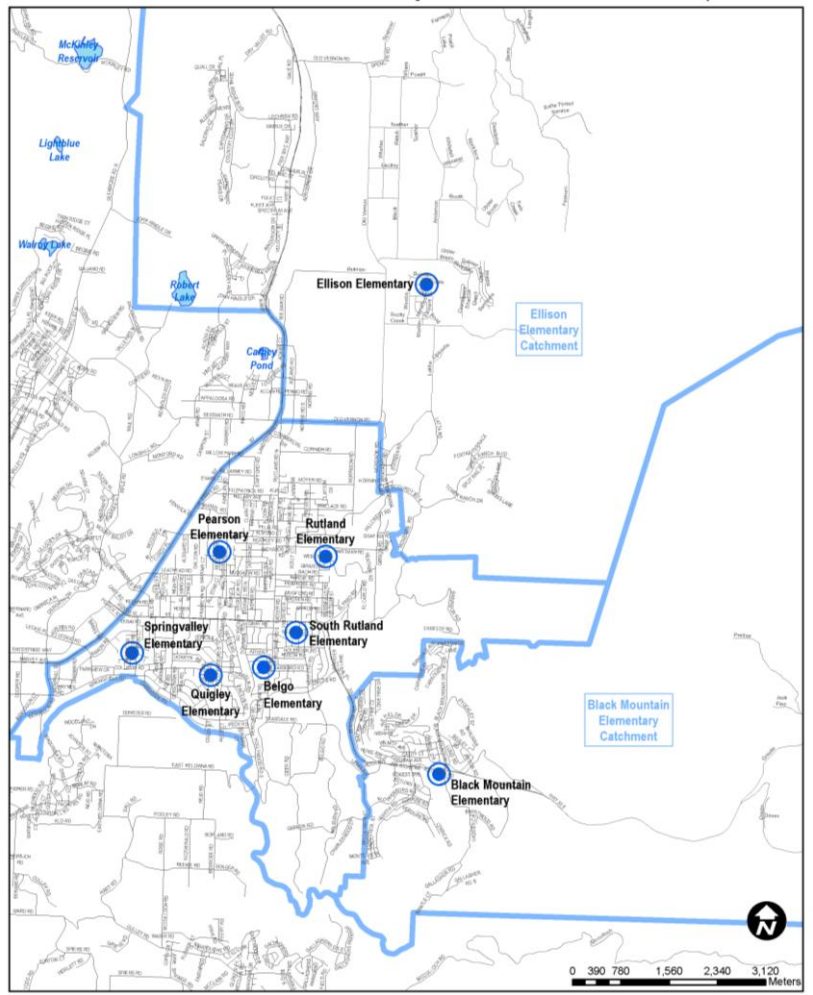
Option	Pros	Cons
1. No Change	<ul style="list-style-type: none">• No change to current situation	<ul style="list-style-type: none">• Does not address capacity constraints at Black Mountain Elementary• Continued transportation uncertainty for students that are outside the 4.0 km limit
2. Reinstate Catchment	<ul style="list-style-type: none">• Manage student enrolment based on student placement policy #405• Transportation certainty for students that are outside the 4.0 km limit	<ul style="list-style-type: none">• Boundary may limit who may be accepted into school based on school policy

CATCHMENT BOUNDARIES

- Principles for setting/changing catchment areas:
 - Reflect traditional neighbourhoods, subdivisions and regions;
 - Minimize safety concerns for elementary students as a result of major roadways or other known hazards;
 - Reflect long-term development to minimize stress caused by frequently changing boundaries in rapidly growing/declining areas;
 - Maximize the efficiency of schools and the transportation system;
 - Maintain a cohort of students at each grade level offered at the school, to support the long-term sustainability of the school.

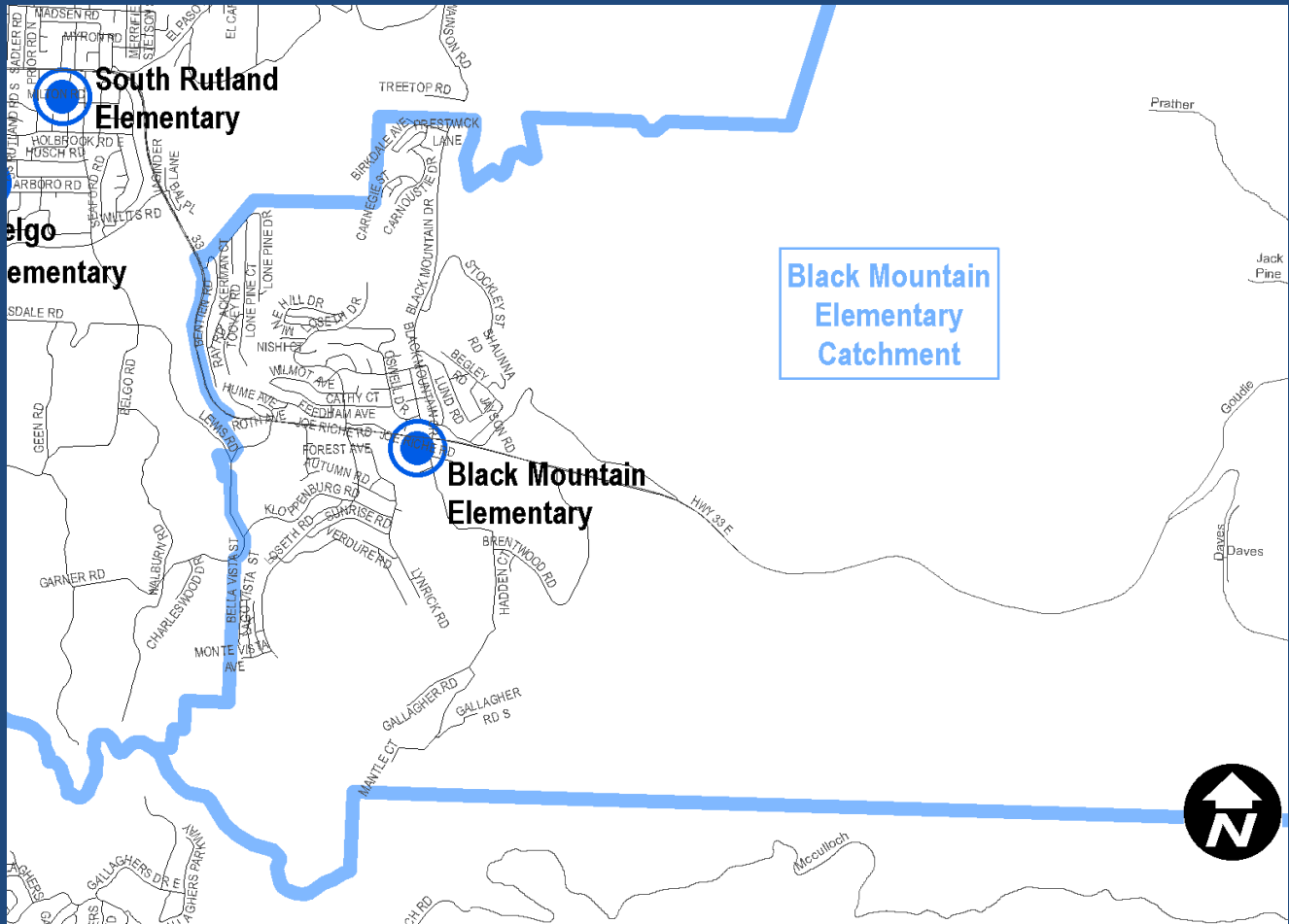
CITY OF KELOWNA FUTURE LAND USE





CATCHMENT REVIEW

- [BME Boundary](#)



NEXT STEPS

- Receive any comments from PAC and school

Planning.Review@sd23.bc.ca

David Widdis, Planning Manager
250-470-3276

- Provide recommendation to the Board in November/December